



Consortium Addysg Ôl-16

Gwynedd ac Ynys Môn

Post-16 Education Consortium

Gwynedd and Anglesey

PROSPECTWS : PROSPECTUS :

16+

2020
2021



ARFON



ESF



Llywodraeth Cymru
Welsh Government

Ewrop & Chymru: Buddsoddi yn eich dyfodol
Cronfa Gymdeithasol Ewrop

Europe & Wales: Investing in your future
European Social Fund

ARFON



COLEG
MENAI
LLANGEFNI

YSGOL
DAVID
HUGHES

YSGOL
FRIARS

COLEG
MENAI BANGOR

YSGOL
TRFYAN

YSGOL
DYFFRYN
OGWEN

YSGOL SYR
HUGH OWEN

YSGOL
BRYNREFAIL

GLYNLLIFON

YSGOL
DYFFRYN
NANTLLE



YSGOL
BRYNREFAIL

YSGOL
DYFFRYN
NANTLLE

YSGOL
DYFFRYN
OGWEN

YSGOL
FRIARS

YSGOL
SYR

HUGH
OWEN

YSGOL
TRYFAN

COLEG
MENAI

COLEG
MEIRION
DWYFOR

DATGANIAD PARTNERIAID PARTNERS STATEMENT

Rydym wedi penderfynu gweithio gyda'n gilydd mewn partneriaeth er budd pob dysgwr yn Ynys Môn a Gwynedd.

Rydym wedi penderfynu ar egwyddorion sylfaenol penodol, sef:

- Gwella ansawdd y dysgu
- Cynnig y cyfleoedd gorau ar gyfer holl ddysgwyr Ynys Môn a Gwynedd
- Cynyddu cyfleoedd ar gyfer darpariaeth ddwyieithog a chyfrwng Cymraeg
- Cynyddu dewisiadau astudio

Rydym yn dymuno pob llwyddiant i chi yn eich arholiadau, ac yn rhoi i chi sicrwydd o'n hymrwymiad i weithio gyda'n gilydd i ehangu eich dewisiadau a'ch cyfleoedd ar gyfer y dyfodol.

We have decided to work together in partnership for the benefit of all learners in Anglesey and Gwynedd.

We have agreed certain basic principles. These are:

- To improve the quality of the learning
- To offer the best opportunities for all the learners in Anglesey and Gwynedd
- To increase opportunities for bilingual and Welsh medium provision
- To increase study options

We wish you every success in your coming examinations and give you the assurance of our commitment to working together to widen your choices and prospects for the future.

ALED JONES GRIFFITHS
Pennaeth / Principal, Coleg Menai + Coleg Meirion Dwyfor

ELLEN WILLIAMS
Pennaeth / Headteacher, Ysgol Brynrefail

ALWEN WATKIN
Pennaeth / Headteacher, Ysgol Dyffryn Nantlle

DYLAN DAVIES
Pennaeth / Headteacher, Ysgol Dyffryn Ogwen

NEIL FODEN
Pennaeth / Headteacher, Ysgol Friars

CLIVE THOMAS
Pennaeth / Headteacher, Ysgol Syr Hugh Owen

ARWYN WILLIAMS
Pennaeth / Headteacher, Ysgol Tryfan



OPSIYNAU 16+

16+ OPTIONS

Yn ogystal â chael dewis o ystod ehangach o bynciau, yn eich ysgol eich hun, ynghyd ag ysgolion Arfon a Choleg Menai, byddwch, hefyd, yn elwa o'r profiad cyfan o berthyn i Chweched Dosbarth.

Ceir ystod eang o weithgareddau, clybiau, a chyfleoedd i wneud gwaith gwirfoddol yn eich ysgol a'r gymuned leol; bydd hyn yn eich cynorthwyo i ddatblygu eich sgiliau a galluoedd ehangach i ddatblygu eich CV. Mae'n bosib hefyd i chi ennill cymwysterau ychwanegol!

Cofiwch cewch lawer o fudd wrth ymroi'n llawn i fywyd a gweithgareddau'r chweched dosbarth, a'r coleg. Yn ogystal bydd cyfle i lawer o'r gweithgareddau hyn gyfrannu tuag y Fagloriaeth Cymraeg.

Yn fuan, byddwch yn gorffen eich addysg ofodol ac yn dewis beth i'w wneud nesaf.

Y dewisiadau sydd o'ch blaen yw:

- Cwrs llawn amser yn y Chweched Dosbarth
- Cwrs llawn amser mewn coleg
- Swydd sy'n golygu rhagor o hyfforddiant, megis prentisiaeth neu gael eich rhyddhau am y diwrnod i'r coleg
- Swydd heb hyfforddiant
- Neu gyfuniad o rai o'r elfennau hyn

As well as being able to choose from a much wider range of subject choices, both in your own school and across the schools in Arfon and Coleg Menai, you will also gain from being part of the whole sixth form experience.

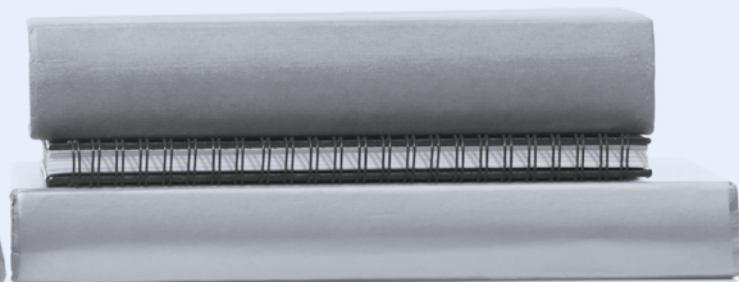
There are a whole variety of activities, clubs and opportunities to do voluntary work in your own school and the local community; this will help you to develop your wider skills and competencies to develop your CV. You can even gain extra qualifications!

Remember you will benefit greatly from full participation in the life and activities of the sixth form and college. There will also be an opportunity for many of these activities to contribute towards the Welsh BaccaLaureate.

You will soon be completing your compulsory education and choosing what to do next.

The choices ahead of you are:

- A full-time course in the Sixth Form
- A full-time course at a college
- A job involving further training, such as an apprenticeship or day release to college
- A job without training
- Or a combination of some of these elements







CYRSIAU COURSES

Mae'n hanfodol eich bod yn dangos diddordeb amlwg ym mhob agwedd ar y cwrs a chymhelliant i ddilyn y cwrs yn y coleg neu'r ysgol yn y bore a phrynhawn neu bawn estynedig.

Efallai ni fydd cwrs ar gael yn fis Medi os ni fydd digon o ddysgwyr wedi arddangos diddordeb ynddo.

Bydd eich ysgol/coleg yn rhoi arweiniad i chi ar gyfer y cyrsiau sydd ar gael.

It is essential that you show an interest in all aspects of the course together with strong motivation to follow the course in the morning and afternoon or extended afternoon at the college or school.

It is possible that a course may not be available in September if an insufficient number of learners have expressed an interest in it.

Your school/college will advise you of the courses available.

CWRS

COURSE

YSGOL/COLEG
SCHOOL/COLLEGE

ASTUDIAETHAU BUSNES

Lefel Uwch/Uwch Gyfrannol CBAC

BETH FYDDA' I'N EI DDYSGU?

- Datblygu dealltwriaeth o gysyniadau a damcaniaethau busnes drwy ystyriaeth feirniadol o faterion, problemau a sefydliadau busnes cyfredol sy'n effeithio ar fywyd pob dydd:
- Cymhwyso cysyniadau a damcaniaethau busnes, gan ddefnyddio amrywiaeth o gyd-destunau, a deall eu gwerth a'u cyfyngiadau wrth egluro ffenomenau'r byd go iawn
- Deall pwysigrwydd a chymhlethdod materion busnes cyfoes yn yr economi leol, cenedlaethol a byd-eang

Mae'r cwrs wedi ei rannu yn bedair uned sydd yn cael eu hasesu trwy arholiad allanol.

Ar ôl blwyddyn 13, gallwch astudio busnes, hysbysebu, marchnata, personél a phynciau perthnasol eraill ar lefel uwch.

BUSINESS STUDIES

WJEC Advanced/Advanced Subsidiary Level

WHAT WILL I LEARN?

How to develop an understanding of business concepts and theories through critical consideration of current business issues, problems and institutions that affect everyday life:

- How to apply business concepts & theories using a range of contexts, and to appreciate their value & limitations in explaining real world phenomena
- How to appreciate the importance and complexity of contemporary business issues in the local, national and global economy

The course is split up into four units which are assessed through external examination.

After Year 13, you could go on to study business, advertising, marketing, personnel and other related subjects at a higher level.

COLEG MENAI
BANGOR

YSGOL FRIARS

(E)



CWRS

COURSE

YSGOL/COLEG
SCHOOL/COLLEGE

PEIRIANNeg SIFIL

Lefel 3 BTEC Diploma Atodol

Mae'r Lefel 3 BTEC Diploma Atodol mewn Adeiladwaith a'r Amgylchfyd Adeiledig yn cynnwys tair uned graidd a thair uned arbenigol i gwblhau'r cymhwyster.

UNEDAU CRAIDD:- Iechyd, Diogelwch a Lles mewn Adeiladwaith, Adeiladwaith Cynladwyedd, Mathemateg mewn Adeiladwaith a'r Amgylchedd Adeiledig, Gwyddoniaeth a Deunyddiau mewn Adeiladwaith a'r Amgylchedd Adeiledig.

GALL UNEDAU OPSIYNOL GYNNWYS:- Technoleg a Dylunio Adeiladwaith mewn Adeiladwaith a Pheirianeg Sifil, Technoleg Adeiladu mewn Adeiladwaith. Ni fydd arholiadau ond byddwch yn cynhyrchu portffolio o waith cwrs a asesir gan eich tiwtor cwrs a'r bwrdd arholi.

CIVIL ENGINEERING

Level 3 BTEC Subsidiary Diploma

The Edexcel Level 3 BTEC Subsidiary Diploma in Construction and the Built Environment consists of three core units plus three specialist units for the completed qualification.

THE COMPULSORY UNITS will cover Health, Safety and Welfare in Construction, Sustainable Construction, Mathematics in Construction and the Built Environment, Science and Materials in Construction and the Built Environment.

OPTIONAL UNITS can cover Construction Technology and Design in Construction and Civil Engineering, Building Technology in Construction.

There will be no examinations but you will be continuously assessed through assignments and course work, which will be assessed by the tutor and the examination board.

COLEG MENAI LLANGFNÍ

(E)



CWRS

COURSE

YSGOL/COLEG
SCHOOL/COLLEGE

CYFRYNGAU CREADIGOL (CYNHYRCHU GEMAU)

Lefel 3 BTEC Diploma Atodol

Mae'r Lefel 3 Edexcel BTEC Diploma Atodol mewn Cyfryngau Creadigol yn cynnwys tair uned graidd a thair uned arbenigol i gwblhau'r cymhwyster.

UNEDAU CRAIDD:- Technegau cyn-gynhyrchu ar gyfer diwydiannau'r Cyfryngau Creadigol, Sgiliau cyfathrebu ar gyfer cynhyrchu Cyfryngau Creadigol, Sgiliau Ymchwil ar gyfer diwydiannau Cyfryngau Creadigol.

GALL UNEDAU OPSIYNOL GYNNWYS:- Dealltwriaeth o'r diwydiant Gemau Cyfrifiadurol, Modelu ac Animeiddio 3D, Peiriannau Gemau Cyfrifiadurol, Cynllunio Gemau Cyfrifiadurol, Sw^n ar gyfer Gemau Cyfrifiadurol, Flash ar gyfer Gemau Cyfrifiadurol, Cynllunio Gemau Cyfrifiadurol, Graffeg Ddigidol ar gyfer Gemau Cyfrifiadurol.

Ni fydd arholiadau ond byddwch yn cynhyrchu portffolio o waith cwrs a asesir gan eich tiwtor cwrs a'r bwrdd arholi.

CREATIVE MEDIA (GAMES DEVELOPMENT)

Level 3 BTEC Subsidiary Diploma

The Edexcel Level 3 BTEC Subsidiary Diploma in Creative Media consists of three core units plus three specialist units for the completed qualification.

THE COMPULSORY UNITS will cover Pre-Production Techniques for the Creative Media industries, Communication Skills for Creative Media Production, Research Techniques for the Creative Media industries.

OPTIONAL UNITS include Understanding the Computer Games Industry, 3D Modelling and Animation, Computer Game Engines, Computer Game Design, Sound for Computer Games, Flash for Computer Games, Designing Tests for Computer Games, Digital Graphics for Computer Games.

There will be no examinations but you will be continuously assessed through assignments and course work, which will be assessed by the tutor and the examination board.

COLEG MENAI LLANGFN

(E)



CWRS

COURSE

YSGOL/COLEG
SCHOOL/COLLEGE

CYFRYNGAU CREADIGOL (TELEDU A FFILM)

Lefel 3 BTEC Diploma Atodol

Mae'r Lefel 3 BTEC Diploma Atodol mewn Cyfryngau Creadigol yn cynnwys tair uned graidd a thair uned arbenigol i gwblhau'r cymhwyster.

UNEDAU CRAIDD:- Technegau Cyn-gynhyrchu ar gyfer Diwydiannau'r Cyfryngau Creadigol, Sgiliau Cyfathrebu ar gyfer cynhyrchu Cyfryngau Creadigol, Sgiliau Ymchwil ar gyfer y Diwydiannau Cyfryngau Creadigol.

GALL UNEDAU OPSIYNOL GYNNWYS:- Technegau golygu Fideo a Ffilm, Technegau Camera, Cynhyrchu a Chyflwyno yn y Diwydiant Teledu a Ffilm, Dealltwriaeth o Hysbysebu a Chynhyrchu Fideo Cerddoriaeth.

Ni fydd arholiadau ond byddwch yn cynhyrchu portffolio o waith cwrs a asesir gan eich tiwtor cwrs a'r bwrdd arholi.

CREATIVE MEDIA (TV & FILM)

Level 3 BTEC Subsidiary Diploma

The Edexcel Level 3 BTEC Subsidiary Diploma in Creative Media consists of three core units plus three specialist units for the completed qualification.

THE COMPULSORY UNITS will cover Pre-Production Techniques for the Creative Media Industries, Communication Skills for Creative Media Production, Research Techniques for the Creative Media Industries.

OPTIONAL UNITS include Understanding the TV and Film Industry, Film and Video Editing Techniques, Camera Techniques, Production and Presentation for the Film and TV Industry, understanding Advertising and Music Video Production.

There will be no examinations but you will be continuously assessed through assignments and course work, which will be assessed by the tutor and the examination board.

COLEG MENAI LLANGFNFI

(C / D / E)



CYFRIFIADUREG

Lefel UG/A CBAC

BETH FYDDAF YN EI DDYSGU?

Mae cymhwyster UG a Safon Uwch Cyfrifiadureg CBAC yn annog dysgwyr i ddatblygu'r canlynol:

- Dealltwriaeth o, a'r gallu i gymhwyso, egwyddorion a chysyniadau sylfaenol cyfrifiadureg, gan gynnwys haniaethu, dadelfennu, rhesymeg, algorithmau a chynrychioli data
- Y gallu i ddansoddi problemau yn nhermau cyfrifiannu trwy brofiad ymarferol o ddatrys problemau o'r fath, gan gynnwys ysgrifennu rhaglenni i wneud hynny
- Y gallu i feddwl yn greadigol, arloesol, dadansoddol, rhesymegol a Beirniadol
- Y gallu i weld perthnasoedd rhwng agweddau gwahanol ar gyfrifiadureg
- Sgiliau mathemategol
- Y gallu i fynegi cyfleoedd unigol (moesol), cymdeithasol (moesegol), cyfreithiol a diwylliannol a risgiau technoleg ddigidol

Mae'r cwrs hwn yn gymysgedd o dasgau ymarferol ac ystafell ddosbarth a byddwch yn cael cyfle i baratoi ac ymarfer eich sgiliau cyn i chi gael eich asesu, fel eich bod yn gwybod a deall yr hyn fydd yn rhaid i chi ei wneud.

BETH FYDDAF EI ANGEN?

4 TGAU gradd A* - C i gynnwys C mewn Mathemateg (Uwch), Gwyddoniaeth a Chymraeg/Saesneg Iaith.

SUT FYDDAF YN CAEL FY ASESU?

Byddwch yn cael ei asesu yn gyson gan eich athro yn ogystal cynhyrchu portffolio o waith cwrs a asesir gan eich athro a'r bwrdd arholi. Byddwch hefyd yn eistedd arholiad bwrdd arholi yn eich ysgol.

PWYNTIAU UCAS

Mae gradd A* yn y Lefel A yn rhoi 56 o bwyntiau UCAS i chi.

BETH SY'N DIGWYDD AR ÔL Y CWRS HWN?

Ar ddiwedd y cwrs, dyma rai o'r llwybrau ar gael:-

- Dilyn cwrs Gradd/Meistr mewn Gwyddorau Cyfrifiadureg
- Dilyn Prentisiaeth gyd cyflogwr lleol yn y maes o gynllunio meddalwedd, codio, peirianeg gyfrifiadurol.

Yn y pen draw, gellir cyflawni graddau a chymwysterau proffesiynol drwy ddilyn unrhyw rai o'r llwybrau yma.

SYNIADAU GYRFAOL!

- Peiriannydd Meddalwedd Proffesiynol
- Arweinydd Tîm Peirianeg Meddalwedd
- Peiriannydd Dylunio Meddalwedd

AM WYBOD MWY?

I ddarganfod mwy am y cwrs hwn, ymwelwch â'r wefan ganlynol:
www.wjec.co.uk/qualifications/computer-science/computer-science-gce/
 Neu cysylltwch â: www.gyrfacymru.com

**YSGOL GYFUN
LLANGFN**

(C / D / E)



COURSE

SCHOOL/COLLEGE

COMPUTER SCIENCE

WJEC AS/A Level

WHAT WILL I LEARN?

The WJEC AS and A Level in Computer Science encourages learners to develop:

- An understanding of, and the ability to apply, the fundamental principles and concepts of computer science, including abstraction, decomposition, logic, algorithms and data representation
- The ability to analyse problems in computational terms through practical experience of solving such problems, including writing programs to do so
- The capacity for thinking creatively, innovatively, analytically, logically and critically
- The capacity to see relationships between different aspects of computer Science
- Mathematical skills
- The ability to articulate the individual (moral), social (ethical), legal and cultural opportunities & risks of digital technology

This course is a mix of practical and classroom tasks and you will get a chance to prepare and practise your skills before you are assessed so that you know and understand what you will have to do.

WHAT WILL I NEED?

4 GCSE grades A*- C, to include a C Grade in Mathematics (Higher), Science and Welsh / English Language.

HOW WILL I BE ASSESSED?

You will be assessed regularly by your teacher and asked to produce a coursework portfolio which will be assessed by your course teacher, the examination board and sit exam board examinations in your school.

UCAS POINTS

An A* grade in the WJEC Computer Science will give you 56 UCAS points.

WHAT HAPPENS AFTER THIS COURSE?

At the end of this course here are some of the pathways available:-

- Follow a modern Degree/Masters course in Computer Science
- Gain a modern apprenticeship with a local employer in the computer science/coding sector

Ultimately professional qualifications can be achieved by following any of these pathways.

CAREER IDEAS!

- Professional Software Engineer
- Professional Computer science Team Leader
- Software Design Engineer

WANT TO KNOW MORE?

To find out more about this course, visit the following web page:
www.wjec.co.uk/qualifications/computer-science/computer-science-gce/
Or contact: www.careerswales.com

YSGOL GYFUN LLANGFNI

(C / D / E)



CWRS

COURSE

YSGOL/COLEG
SCHOOL/COLLEGE

DRAMA

Safon Uwch/Uwch Gyfrannol CBAC

Mae'r Cwrs Safon Uwch/Uwch Gyfrannol Drama ac Astudiaethau Theatr yn cynnwys pedair uned orfodol i gwblhau'r cymhwyster.

UWCH GYFRANNOL:

DA1 Gweithdy Perfformio: Perfformir dwy olygfa - drama osod a darn dyfeisiedig gan arbrofi gyda dulliau ymarferwyr theatr gwahanol.

DA2 Testun mewn perfformiad: Astudiaeth o ddwy ddrama osod o wahanol gyfnodau o safbwynt cymeriadu a llwyfannu: Ysgrifennu adolygiad o berfformiad byw yn y theatr.

SAFON UWCH:

DA3 Perfformiad ar Thema osod gyda gwerthusiad ysgrifenedig o'r gwaith i ddilyn.

DA4 Testun yn ei gyd-destun: Astudiaeth o ddwy ddrama osod ynghyd ag ystyriaeth o gyfarwyddo, cynllunio a llwyfannu.

DRAMA

WJEC Advanced/Advanced Subsidiary Level

The A level/AS level course in Drama and Theatre studies consists of four compulsory units.

ADVANCED SUBSIDIARY:

DA1 Performance workshop: Two scenes will be performed - one set and the other devised using the methods of two different theatre practitioners.

DA2 Text in performance: A study of two set plays from different periods in terms of characterisation and staging: A written review of a live theatrical performance.

ADVANCED LEVEL:

DA3 Performance on a set theme with a written evaluation of the work to follow.

DA4 Text in context: A study of two set plays and an unit which concentrates on directing, design and staging.

YSGOL
UWCHRADD
BODEDERN

(C)

YSGOL FRIARS

(E)



CWRS

COURSE

YSGOL/COLEG
SCHOOL/COLLEGE

D&T: DYLUNIO CYNNYRCH

Lefel Uwch/Uwch Gyfranol CBAC

Cynlluniwyd y maes llafur hwn i ddarparu dilynant o TGAU ac i ddarparu sylfaen gadarn ar gyfer astudio mewn addysg uwch.

Y PRIF FEYSYDD ASTUDIO YM MLWYDDYN 12
YW: Archwilio'r dewisiadau o ran ffordd o fyw sydd ar gael a'r ffactorau sydd yn effeithio/dylanwadu ar y dewisiadau hyn: y cyfleoedd a'r llwybrau sydd ar gael i'r rhai sydd yn cymryd rhan mewn gwahanol weithgareddau; beth mae cymryd rhan mewn gweithgaredd corfforol yn ei gynnig yn gorfforol, yn seicolegol ac yn dechnegol; rôl maeth mewn perfformiad ac iechyd: y manteision o fyw bywyd heini.

YM MLWYDDYN 13 Y PRIF FEYSYDD YW: mireinio perfformiad chwaraeon a gwella a chynnal iechyd; y cyfleoedd a'r llwybrau sydd ar gael ar gyfer cymryd rhan mewn gweithgaredd corfforol; y ffactorau cymdeithasol, economaidd, diwylliannol a moesegol a allai ddylanwadu ar faint o weithgaredd corfforol a wneir; masnacheiddio chwaraeon; datblygiadau gwyddonol a thechnolegol mewn gweithgaredd corfforol.

D&T: PRODUCT DESIGN

WIEC Advanced/Advanced Subsidiary Level

The course is a natural progression to Design & Technology at KS4 - areas Resistant Materials, Product Design and Graphic Products. Design and Technology offers an unique opportunity in the curriculum for candidates to identify and solve real problems by designing and making products or systems in a wide range of contexts relating to their personal interests. Design and Technology develops candidates' interdisciplinary skills and their capacity for imaginative, innovative thinking, creativity and independence.

Presentations, explanations and expectations will be covered during lessons. For the majority of the afternoon sessions in school, students will be working on their Design & Make project.

It is expected that students will continue with their design and development and theory work outside the allotted contact time.

YSGOL

BRYNREFAIL

(C / D / E)

YSGOL FRIARS

(E)



CWRS

COURSE

YSGOL/COLEG
SCHOOL/COLLEGE

FFRANGEG

Lefel Uwch/Uwch Gyfrannol CBAC

Siarad Ffrangeg yn fwy rhugl a datblygu sgiliau gwrando, darllen a deall ac ysgrifennu yn yr iaith dramor.

Gwella sgiliau technoleg gwybodaeth drwy wneud cyflwyniadau llafar yn Ffrangeg.

Gwella'r sgil o weithio mewn grŵp drwy baratoi gwaith llafar ac ysgrifennu ar gyfer ei asesu.

Dysgu mwy am y ffordd o fyw a llefydd yn Ffrainc, Gwlad Belg, y Swistir a gwledydd eraill yn y byd lle siaredir Ffrangeg.

Gwella eich hunanhyder, sgiliau canolbwytio a dysgu ar y cof, a sylwi ar berthynas a phatrwm rhwng ieithoedd.

Sut i ddefnyddio'ch profiad o'r cwrs ar gyfer y byd gwaith a'ch oriau hamdden i ddysgu ieithoedd eraill ac i ehangu gorwelion.

Disgwylir i'r disgyblion wrando ar CDs ac actio mewn paru neu mewn grŵp yn Ffrangeg. Mae cyfleoedd i ddefnyddio cylchgronau a llyfrau Ffrangeg, a chyfrifiaduron i ymchwilio a gwneud gwaith.

FRENCH

WJEC Advanced/Advanced Subsidiary Level

To speak French more fluently and develop listening, reading & understanding, and writing skills in the foreign language.

Improve information technology skills by doing oral presentations in French.

Improve the skill of working in a group by the preparation of oral and written work for assessment.

Learn more about the lifestyle and places in France, Belgium, Switzerland and other countries in the world where French is spoken.

Improve your self-confidence, concentration & memorising skills, and notice the relationship & pattern between languages.

How to use your experience of the course for the world of work and use your leisure times to learn other languages and broaden your horizons.

The pupils are expected to listen to CDs and act in pairs or in a group in French. There is an opportunity to use French magazines and books and computers to research and complete work.

YSGOL FRIARS



CWRS

COURSE

YSGOL/COLEG
SCHOOL/COLLEGE

MATHEMATEG PELLACH

Lefel Uwch/Uwch Gyfrannol CBAC

BETH FYDDAI'N EI DDYSGU?

Y tair prif ddisgyblaeth o Fathemateg Pur, Mecaneg ac Ystadegaeth.

SUT FYDDAI'N DYSGU?

Cyfres o fodiwlau ym mhob un o'r tair disgyblaeth a gaiff eu cytuno i roi Mathemateg Pellach mewn Lefel A.

BETH FYDD EI ANGAN ARNAF?

Gradd 'A' yn y TGAU.

SUT FYDDAI'N CAEL FY ASESU?

Trwy arholiad yn unig.

BETH SY'N DIGWYDD AR ÔL Y CWRS HWN?

Astudiaethau lefel gradd mewn cyrsiau'n seiliedig ar fathemateg, megis gwyddoniaeth pur a pheirianeg.

FURTHER MATHEMATICS

WJEC Advanced/Advanced Subsidiary Level

WHAT WILL I STUDY?

The three main disciplines of Pure Mathematics, Mechanics and Statistics.

HOW WILL I STUDY?

A series of modules in each of the three disciplines which will be aggregated to give Further Maths at A Level.

WHAT WILL I NEED?

An A grade at GCSE.

HOW WILL I BE ASSESSED?

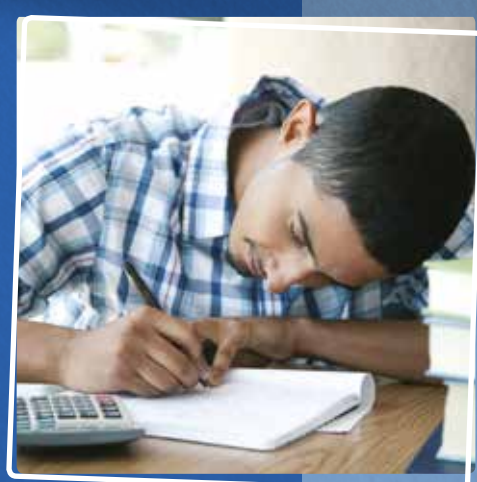
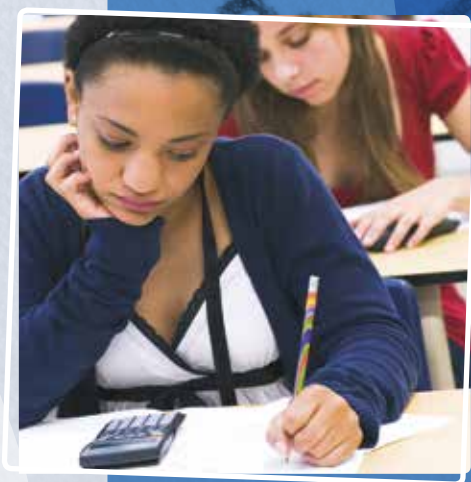
By examination only.

WHAT HAPPENS AFTER THIS COURSE?

Degree level studies in mathematics based courses, such as pure sciences and engineering.

YSGOL FRIARS

(C / D / E)



CWRS

COURSE

YSGOL/COLEG
SCHOOL/COLLEGE

DAEARYDDIAETH

Lefel Uwch/Uwch Gyfrannol CBAC

Mae CBAC yn cynnig cwrs TAG pedair uned gan ddilyn dull ymholi ar gyfer gwaith maes ar lefel UG ac A2. Mae hwn yn gwrs poblogaidd y mae dysgwyr mewn canolfannau led led Cymru a Lloegr yn ei fwynhau am sawl rheswm. Anogir myfyrwyr yn y fanyleb hon i ddeall byd sy'n fyd-eang, ei heriau cymhleth a materion fel newid hinsawdd, newidiadau mewn pŵer economaidd, tlodi ac amddifadedd a chynaliadwyedd. Mae'n ddilyniant hefyd o'r TGAU Daearyddiaeth A neu TGAU Daearyddiaeth B.

Mae'n angenrheidiol eich bod wedi derbyn gradd C o leiaf yn eich TGAU Daearyddiaeth cyn dechrau astudio'r lefel A yn y maes.

GEOGRAPHY

WJEC Advanced/Advanced
Subsidiary Level

WJEC offers a four unit course at GCE with an enquiry based approach to fieldwork at both AS and A2. It is a popular course enjoyed by learners in centres all over England and Wales for a number of reasons. The specification encourages students to understand a global world, its complex challenges and such issues as climate change, shifts in economic power, poverty & deprivation and sustainability. It also provides progression from either GCSE Geography A or GCSE Geography B.

It is essential that you have achieved at least a GCSE grade C in Geography before commencing studying this subject at A level.

YSGOL FRIARS

(E)

YSGOL DAVID HUGHES

(C / D / E)



CWRS

COURSE

YSGOL/COLEG
SCHOOL/COLLEGE

ALMAENEG

Yn ystod y cwrs byddwch yn astudio ystod o themâu fydd yn eich helpu i ddatblygu eich sgiliau llafar, gwrando, darllen ac ysgrifennu Almaeneg.

Yn ogystal â dysgu i ddatblygu eich sgiliau cyfathrebu byddwch yn gweithio ar eich sgiliau TGCh drwy ddod o hyd i, creu a chyflwyno gwybodaeth a syniadau.

Byddwch yn gweithio ar eich pen eich hunain, mewn pâr neu mewn grwp i gwblhau tasgau neu i siarad yn yr iaith darged. Byddwch yn cymryd rhan mewn gemau iaith a thasgau datrys problemau.

Byddwch yn dysgu i gymharu eich diwylliant, iaith a chymuned eich hunain gyda'r Almaen a gwledydd sydd yn siarad Almaeneg.

Tra'n astudio ystod o themâu sydd yn ymwneud â'r Almaen a gwledydd sydd yn siarad Almaeneg byddwch yn datblygu ymwybyddiaeth o bwysigrwydd ieithoedd yng nghymdeithas fyd-eang yr unfed ganrif ar hugain a byd gwaith.

GERMAN

During this course you will study a range of topics which will help to develop your speaking, listening, reading and writing skills in German.

As well as learning to develop your communication skills you will work on your ICT skills by finding, creating and presenting information and ideas.

You will work independently, in pairs or groups to complete tasks or to speak in the target language. You will take part in language games and solving puzzles.

You will learn to compare your own culture, language and community with those of Germany and other German speaking countries.

By studying a range of topics with reference to Germany and other German speaking countries you will develop awareness of the importance of languages in the global society of the twenty-first century and the world of work.

YSGOL DAVID HUGHES



IECHYD A GOFAL CYMDEITHASOL

CBAC Lefel UG / A

Mae'r cymhwyster TAG UG a Safon Uwch mewn Iechyd a Gofal Cymdeithasol, a Gofal Plant yn addas ar gyfer dysgwyr ôl-16 sydd â diddordeb mewn dysgu am ddatblygiad a gofal unigolion drwy gydol oes o adeg cenhedlu i oedolaeth ddiweddarach.

Bydd dysgwyr yn dilyn astudiaeth eang o iechyd a gofal cymdeithasol, a gofal plant ar lefel UG, ac wedyn gallent ddewis rhwng dau lwybr ar lefel U2 i ddatblygu dyfnder gwybodaeth a dealltwriaeth naill ai mewn gofal plant neu iechyd a gofal cymdeithasol oedolion.

Mae'r cymhwyster TAG UG a Safon Uwch mewn Iechyd a Gofal Cymdeithasol, a Gofal Plant hefyd yn addas ar gyfer dysgwyr nad ydynt wedi astudio Iechyd a Gofal Cymdeithasol o'r blaen ond sydd â'r gallu i astudio Lefel 3.

Bwriad y cwrs yw darparu myfyrwyr gyda chyflwyniad i wybodaeth a sgiliau sy'n ymwneud â'r Sectorau Iechyd a Gofal Cymdeithasol a'u datblygu.

Mae'r cymhwyster yn galluogi dysgwyr i feithrin a dangos eu gwybodaeth, eu sgiliau a'u dealltwriaeth o fewn cyd-destun iechyd a gofal cymdeithasol, a gofal plant.

Mae'r materion cyfredol canlynol wedi'u cynnwys yn y fanyleb:

- Hybu iechyd a llesiant
- Cefnogi iechyd, llesiant a gwydnwch yng Nghymru
- Persbectifau damcaniaethol ar ddatblygiad plant a phobl ifanc
- Cefnogi datblygiad, iechyd, llesiant a gwydnwch plant a phobl ifanc
- Persbectifau damcaniaethol ar ymddygiad oedolion
- Cefnogi oedolion i gynnal iechyd, llesiant a gwydnwch

SUT MAE'R CWRS YN CAEL EI ASESU?

Mae'r cymhwyster TAG UG a Safon Uwch mewn Iechyd a Gofal Cymdeithasol, a Gofal Plant wedi'i rannu'n gyfanswm o chwe uned, dwy uned UG (Uned 1 ac Uned 2) a phedair uned U2 (unedau 3, 4, 5 a 6). Mae dysgwyr Safon Uwch yn astudio cyfanswm o bedair uned: dwy uned UG ynghyd â'r ddwy uned U2 yn ymwneud â'r llwybr a ddewiswyd ganddynt.

Mae 50% o'r cymhwyster TAG UG a Safon Uwch mewn Iechyd a Gofal Cymdeithasol, a Gofal Plant yn cael ei asesu'n fewnol a 50% yn cael ei asesu'n allanol.

Rhaid i ymgeiswyr gwblhau'r canlynol yn llwyddiannus:

- Aseiniadau a osodir yn allanol, a'u marcio'n fewnol
- Arholiadau allanol.

BETH NESAF?

Mae'r cymhwyster yn cynnig sylfaen addas ar gyfer astudio iechyd a gofal cymdeithasol drwy amrywiaeth o gyrsiau addysg uwch, neu i gyflogaeth. Gall dysgwyr hefyd symud ymlaen i gymwysterau eraill o fewn y gyfres iechyd a gofal cymdeithasol, a gofal plant.

Yn ogystal, mae'r fanyleb hon yn gwrs astudio sy'n gydlynol, yn foddhaol ac yn werth chweil i'r dysgwyr hynny nad ydynt yn symud ymlaen i astudio ymhellach yn y pwnc hwn.

**YSGOL
BRYNREFAIL**

(C / D / E)



HEALTH AND SOCIAL CARE

AS/A level WJEC

The GCE AS and A Level in Health and Social Care, and Childcare is suitable for post-16 learners who are interested in learning about the development and care of individuals throughout the life span: from conception to later adulthood.

Learners will follow a broad study of health and social care, and childcare at AS, and can then choose between two pathways at A2 to develop depth of knowledge and understanding in both childcare or adult health and social care.

GCE AS and A Level in Health and Social Care, and Childcare is also suitable for learners who have not previously studied Health and Social Care but who are capable of Level 3 study.

The course is intended to provide students with an introduction to and development of knowledge and skills appertaining to the health and social care sectors.

The qualification enables learners to develop and demonstrate their knowledge, skills and understanding within the context of health and social care, and childcare.

The following current issues are included in the specification:

- Promoting health and well-being
- Supporting health, well-being and resilience in Wales
- Theoretical perspectives of children and young people's development
- Supporting the development, health, well-being and resilience of children and young people
- Theoretical perspectives of adult behaviour
- Supporting adults to maintain health, well-being and resilience

HOW IS THE COURSE ASSESSED?

The GCE AS and A Level in Health and Social Care, and Childcare is divided into a total of six units, two AS units (Unit 1 and Unit 2) and four A2 units (Units 3, 4, 5 and 6). A level learners study a total of four units: two AS units plus the two A2 units related to their chosen pathway.

The GCE AS and A Level in Health and Social Care, and Childcare is assessed through 50% internal assessment and 50% external assessment.

Candidates must successfully complete:

- Externally set, internally marked assignments
- External examination

WHAT NEXT?

The qualification provides a suitable foundation for the study of health and social care through a range of higher education courses, or into employment. Learners may also progress to other qualifications within the health and social care and childcare suite.

In addition, the specification provides a coherent, satisfying and worthwhile course of study for learners who do not progress to further study in this subject.

YSGOL**BRYNREFAIL**

(C / D / E)



CWRS

COURSE

YSGOL/COLEG
SCHOOL/COLLEGE

TGCH

(Safon Uwch/Uwch Gyfrannol CBAC)

Bydd cymhwyster TGCH yn eich cefnogi i ddatblygu ystod eang o sgiliau, gwybodaeth a dealltwriaeth yn y maes.

Byddwch yn astudio'r gwahanol dechnolegau sy'n amlygu a'u heffaith ar unigolion a chymdeithas; deall oblygiadau defnyddio TGCH a meddu'r sgiliau, gwybodaeth a dealltwriaeth o TGCH i ddatrys problemau.

UG/A2

Mae blwyddyn gyntaf y cwrs yn ymdrin a testunau megis:

- Uned TGCH1: Systemau Gwybodaeth
- Uned TGCH 2: Cyflwyno Tasg Gwybodaeth

Mae'r ail flwyddyn yn eich galluogi i gwblhau'r cwrs gyda testunau megis:

- Uned TGCH 3: Defnydd ac Effaith TGCH
- Uned TGCH 4: Prosiect cronfa ddata perthynol

DILYNIANT

Mae nifer o fyfyrwyr yn symud ymlaen i astudio cyrsiau perthnasol mewn prifysgol e.e. TG ac Astudiaethau Busnes, Rheolaeth TG a systemau rheoli gwybodaeth neu yrfa mewn cefnogi defnyddwyr TG, dadansoddi systemau a datblygu systemau. Mae nifer o fyfyrwyr yn symud i gyflogaeth yn y maes neu gynllun prentisiaeth.

ICT

(AS/A2 WJEC)

The A level ICT will assist you in developing a broad range of skills, knowledge and understanding of ICT.

You will study the different technologies emerging and their impact on individuals and society, understand the consequences of using ICT and acquire the skills, knowledge and understanding of ICT to help solve problems.

AS/A2 UNITS

The first year is the AS course and covers topics such as:

- Unit IT1: Information systems
- Unit IT2: Presenting information task

The second year completes the A' level with topics such as:

- Unit IT3: Use and impact of ICT
- Unit IT4: Relational database project

PROGRESSION

Many students apply to and are offered places at university to study courses such as IT and business studies, IT management and business information systems or any career in user support, systems analysis and systems development. A number of students go onto employment or move onto an apprenticeship programme.

YSGOL DYFFRYN OGWEN

(C / D / E)



CWRS

COURSE

YSGOL/COLEG
SCHOOL/COLLEGE

PEIRIANNEG FECANYDDOL

Lefel 3 BTEC Diploma Atodol

Bydd y cymhwyster yn cynnwys 6 uned wedi'u dewis o blith banc o unedau gorfodol a dewisol.

BYDD UNEDAU CRAIDD GORFODOL yn cael eu dewis o blith y canlynol: Iechyd a Diogelwch yn y Gweithle Peirianeg, Cyfathrebu ar gyfer Technegwyr Peirianeg, Prosiect Peirianeg, Mathemateg ar gyfer Technegwyr Peirianeg, Egwyddorion a Chymwysiaid Mecanyddol. Mae'r rhain yn gyflwyniad cyffredinol i beirianeg ac yn cyflwyno'r sylfeini ar gyfer cymhwyso egwyddorion peirianeg.

BYDD UNEDAU OPSIYNOL yn cael eu dewis mewn cydweithrediad rhwng ysgolion, diwydiannau lleol a Choleg Menai. Unedau posibl fyddai:

- Dylunio mewn Peirianeg
- Nodweddion Deunyddiau Peirianeg a'u Defnydd
- Drafftio â Chymorth Cyfrifiadur mewn Peirianeg
- Defnydd o Reolyddion Rhifiadol mewn Peirianeg
- Technegau a Phrosesau Eilaidd a Gorffen.

Ni fydd arholiadau ond byddwch yn cynhyrchu portffolio o waith cwrs a asesir gan eich tiwtor cwrs a'r bwrdd arholi.

MECHANICAL ENGINEERING

Level 3 BTEC Subsidiary Diploma

The qualification will consist of 6 units selected from a bank of compulsory and optional units.

THE COMPULSORY UNITS will be selected from the following units: Health and Safety in the Engineering Workplace, Communications for Engineering Technicians, Engineering Project, Mathematics for Engineering Technicians, Mechanical Principles and Applications. These give a general introduction into engineering and the basics to apply engineering principles.

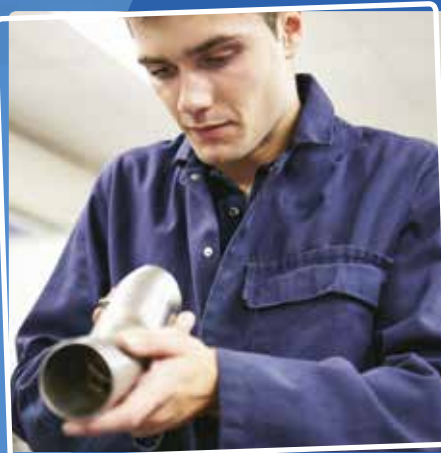
OPTIONAL UNITS will be selected in collaboration between schools, local industry and Coleg Menai. The following are a short list of possible units:

- Engineering Design
- Properties and Applications of Engineering Materials
- Computer Aided Drafting in Engineering
- Applications of Computer Numerical Control in Engineering
- Engineering Secondary and Finishing Techniques and Processes

There will be no examinations but you will be continuously assessed through assignments and course work, which will be assessed by the tutor and the examination board.

COLEG MENAI LLANGEFNI

(C / D / E)



CWRS

COURSE

YSGOL/COLEG
SCHOOL/COLLEGE

CERDD

Safon Uwch/Uwch Gyfrannol CBAC

SAFON UG

Perfformio Cyfansoddi a Gwerthuso.

LEFEL A

Perfformio Cyfansoddi a Gwerthuso.

Cynhelir y gwersi yn Ysgol Tryfan fel rhan o Bartneriaeth Arfon.

Byddwch angen y gallu i berfformio ar offeryn cerdd neu ganu yn ogystal â'r gallu i ddadansoddi a gwerthfawrogi cerddoriaeth trwy ddilyn sgôr. Y gallu i gyfansoddi a bod yn greadigol gyda cherddoriaeth.

Byddwch yn cael eich arholi'n allanol yn y tair elfen uchod.

MUSIC

WJEC Advanced/Advanced Subsidiary Level

AS

Performing, Composing and Evaluating.

A LEVEL

Performing, Composing and Evaluating.

The lessons are held in Ysgol Tryfan as part of the Arfon Partnership.

You will need the ability to play a musical instrument or to sing as well as the ability to analyse and appreciate music by reading from a score. The ability to compose and to be creative with music.

There will be an external examination in all three elements.

YSGOL TRYFAN

(C / D / E)



CWRS

COURSE

YSGOL/COLEG
SCHOOL/COLLEGE

SEICOLEG

Safon Uwch/Uwch Gyfrannol CBAC

Mae'r fanyleb ar gyfer Seicoleg UG a safon uwch yn annog ymgeiswyr i:

- Ddeall natur wyddonol Seicoleg
- Caffael gwybodaeth a dealltwriaeth feirniadol o theoriau seicolegol yn ogystal ag ymagweddau, cysyniadau, astudiaethau craidd a dulliau
- Caffael a datblygu sgiliau dadansoddi, dehongli a gwerthuso
- Deall methodoleg seicolegol ac amrediad o ddulliau ymchwil (meintiol ac ansoddol)
- Datblygu dealltwriaeth o wahanol feysydd Seicoleg a'u cymwysiadau
- Cynllunio a pharatoi adroddiadau ar ymchwiliadau seicolegol, ynghyd â dadansoddi a dehongli data
- Gwerthfawrogi arwyddocâd materion moesegol mewn Seicoleg
- Datblygu sgiliau sy'n cryfhau'r gallu i gyfranogi'n fwy effeithiol ym mywyd oedolion

PSYCHOLOGY

As/A Level WJEC

AS and A level specifications in Psychology encourage candidates to:

- Understand the scientific nature of psychology
- Acquire knowledge and a critical understanding of psychological theories, approaches, concepts, core studies and methods
- Acquire and develop skills of analysis, interpretation and evaluation
- Understand psychological methodology and a range of research methods (both quantitative and qualitative)
- Develop an understanding of different areas and applications of psychology
- Design and report psychological investigations, and analyse and interpret data
- Appreciate the significance of ethical issues in psychology
- Develop skills that enhance the ability to participate more effectively in adult life

YSGOL SYR

HUGH OWEN

(C / D / E)

**COLEG MEIRION
DWYFOR.
SGILIAITH**

TRWY FIDEO

YN YSGOL

BRYNREFAIL

+ DYFFRYN

OGWEN /

COLEG MEIRION

DWYFOR

COLEG MEIRION

DWYFOR

SGILIAETH

COLEG MEIRION

DWYFOR.

SGILIAITH

THROUGH

VIDEO IN

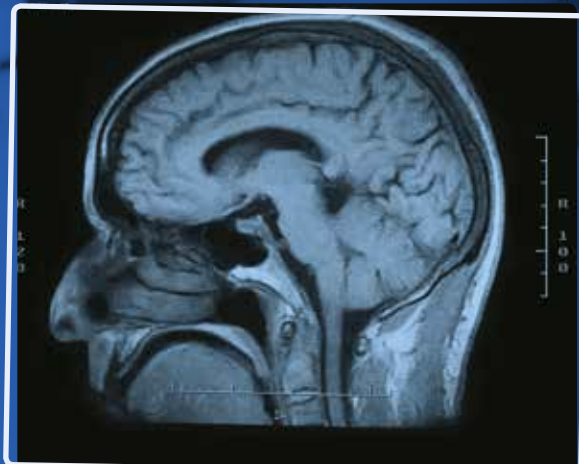
IN YSGOL

BRYNREFAIL

+ DYFFRYN

OGWEN

(C / D / E)



CWRS

COURSE

YSGOL/COLEG
SCHOOL/COLLEGE

CYMDEITHASEG

Safon Uwch/Uwch Gyfrannol CBAC

Mae Cymdeithaseg yn rhoi cyfle i ddysgwyr ddatblygu dealltwriaeth o'r newidiadau sy'n digwydd yn y gymdeithas ym Mhrydain. Ceir ynddi hefyd gyfleoedd i ddysgu am ddulliau ac ymchwil cymdeithasegol. Gall testunau dewisol eu defnyddio i gefnogi astudiaethau galwedigaethol megis iechyd a gofal cymdeithasol, nyrsio a gwaith cymdeithasol. Mae'r cwrs hwn hefyd yn sylfaen addas ar gyfer astudio cymdeithaseg neu faes cysylltiedig mewn addysg uwch megis trosedd neu'r gyfraith.

Bydd dewis o destunau ar gael i'r dysgwyr, yn cynnwys teuluoedd, diwylliant ieuenctid, y gymuned, addysg, crefydd, y cyfryngau torfol, trosedd, gwleidyddiaeth, iechyd ac anabledd, rhaniadau cymdeithasol a chymdeithaseg fyd-eang.

Mae'r pwyslais ar sgiliau yn y fanyleb yn galluogi'r dysgwyr i ddatblygu a dangos eu 'dychymyg cymdeithasegol' trwy ganolbwyntio ar eu hunaniaeth bersonol, eu cyfrifoldebau a'u rôl yn y gymdeithas.

SOCIOLOGY

As/A Level WJEC

Sociology allows learners the opportunity to develop an understanding of changing British society as well as opportunities to learn about sociological methods and research. The choice of topics can be used to support vocational studies such as health and social care, nursing and social work. The course is also a suitable foundation for the study of sociology or a related area of higher education courses such as criminology or law.

Learners will be offered a choice of topics that include families, youth culture, the community, education, religion, mass media, crime, politics, health and disability, social divisions and world sociology.

The emphasis on skills allows learners to develop and demonstrate their 'sociological imagination' by focusing on their own personal identity, responsibilities and roles within society.

YSGOL TRYFAN

(C / D / E)





YSGOL
BRYNREFAIL

YSGOL
DYFFRYN
NANTLLE

YSGOL
DYFFRYN
OGWEN

YSGOL
FRIARS

YSGOL
SYR
HUGH
OWEN
YSGOL
TRYFAN
COLEG
MENAI
COLEG
MEIRION
DWYFOR



Consortiwm Addysg Ôl-16

Gwynedd ac Ynys Môn

Post-16 Education Consortium

Gwynedd and Anglesey